

*Hubble  
Bisbee*

CHRISTIE'S  
INTERNATIONAL REAL ESTATE



DEVON HILL  
13 DEVON HILL ROAD, #C4



LOCATIONS

2330 W Joppa Road, Suite 104  
Lutherville, MD 21093  
181 Harry S Truman Pkwy Ste 200  
Annapolis, MD 21401

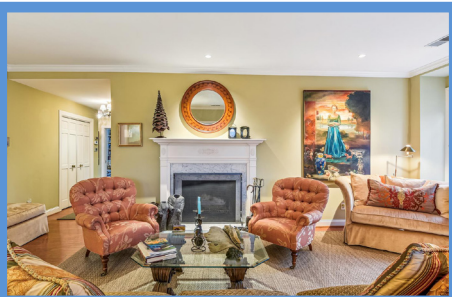


LYNN PLACK

Realtor®  
LynnPlack@HubbleBisbee.com  
410-340-2939 (Mobile)  
410-321-1411 (Office)

WWW.HUBBLEBISBEE.COM | (410) 321-1411 (OFFICE) | 











### FOYER 13'3" X 13'0"

- Six-panel entry door
- Hardwood flooring
- Crystal ceiling light
- Brass 3-light chandelier with shades
- Double closet
- Cased portal to Kitchen
- Access to Bedroom Hall
- Flows to Living Room
- Pocket doors to Bedroom 3/Den

### LIVING ROOM 22'0" X 16'0"

- Hardwood flooring
- Crown molding
- Wood burning fireplace with colonial mantel, marble hearth and surround
- French doors to Sunroom with full-length sidelights
- Box bay window with custom woven shade
- Recessed lighting
- Wide cased portal to Dining Room

### DINING ROOM 14'0" X 11'6"

- Hardwood flooring
- Double window with exterior railing
- Double china closet
- Cased portal to Kitchen
- Chandelier and 2 wall sconce lights excluded

### KITCHEN 11'5" X 11'3"

- Marble finish porcelain tile floor
- White raised-panel wood cabinets including 42" wall cabinets, roll-out trays, refrigerator enclosure, pantry cabinet, lazy-Susan base and wall cabinet, dovetailed drawers and matching crown trim
- Corian counters
- Marble finish ceramic tile backsplashes
- Samsung stainless steel French door refrigerator with water/ice dispenser
- Frigidaire stainless steel electric range
- Frigidaire stainless steel built-in microwave
- Bosch stainless steel dishwasher
- Stainless steel undermount sink with disposal
- Recessed lighting
- Under-cabinet lighting
- Ceiling fan with light
- Cased portal to passage to Foyer with electric service panels, laundry closet with vinyl flooring,

GE stack washer and dryer unit and State Select electric water heater

### SUNROOM 12'0" X 11'0"

- French doors from Living Room
- Hardwood flooring
- Beadboard ceiling
- Four oversized floor-length windows with custom woven shades offering garden views
- Double closet
- Ceiling fan

### BEDROOM HALL

- Access from Foyer
- Hardwood flooring
- Linen closet

### PRIMARY BEDROOM

19'0" X 13'1"

- Private hall entry with 2 double closets and access to Primary Bath
- Hardwood flooring
- Three windows with plantation shutters
- Crown molding
- Two additional closets
- Two double wall sconce lights with shades
- Ceiling fan with light

### PRIMARY BATH

- Ceramic tile floor
- Vanity with granite top, undermount sink, framed mirror and wall sconce lighting
- Ceramic tile shower stall with recessed light and glass doors
- Toto flush
- Kohler closet
- Double linen closet and additional linen closet
- Ceiling light/exhaust fan

### BEDROOM 2 14'3" X 13'6"

- Wall-to-wall carpeting
- Double window with plantation shutters
- Crown molding
- Double closet
- Ceiling fan with light

### BEDROOM 3/DEN 13'4" X 13'0"

- Hardwood flooring
- Custom built-in bookcases surrounding window
- Window with custom woven shade
- Crown molding
- Walk-in closet
- Ceiling fan with light
- Wall mount TV and bracket excluded

### HALL BATH

- Ceramic tile floor
- Vanity with granite top, undermount sink, plate glass mirror and overhead lighting
- Porcelain tile shower stall with decorative border, recessed light and glass door enclosure
- Kohler flush
- Recessed lighting
- Crown molding
- Exhaust fan

### FEATURES & AMENITIES

- Top floor unit
- Nine-foot ceiling height
- Hardwood floors
- Updated Kitchen and Hall Bath
- Tremendous closet space
- In-unit laundry
- Living Room, Sunroom and Dining Room overlook gardens from elevated vantage
- Lower level storage room with work bench and electric outlets

*All information contained herein deemed reliable but not guaranteed by the Broker*

